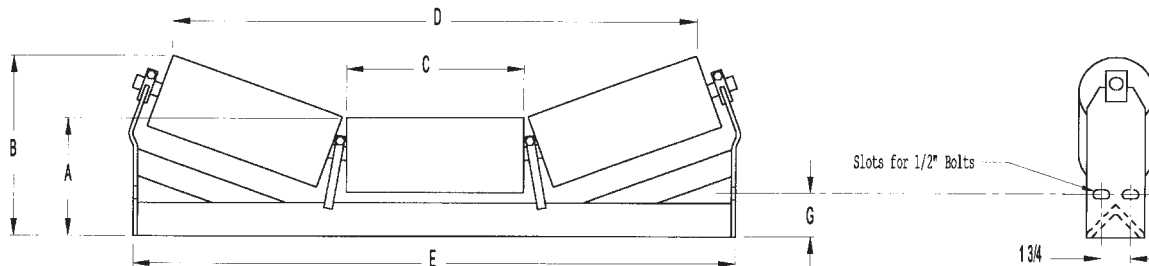


## 3-Roll Steel Rollers 20-Degree

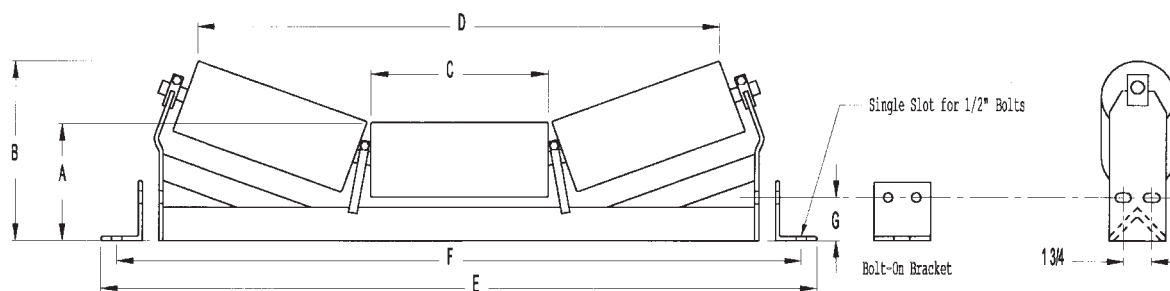
4 1/2" Dia. Rollers, Sealed for Life Bearings

**Inside Mount**



Belt Width	Part Number	A	B	C	D	E	G	Rollers	Center Pins	End Pins	Weight in lbs
18	MJ1820	8 1/2	10 3/4	6 1/2	19 1/2	24	1	S450608	SS4584	SS4581	30
24	MJ2420	7 7/8	10 7/8	8 1/2	25 1/2	30	1	S450808	SS4584	SS4581	35
30	MJ3020	7 1/8	10 7/8	10 1/2	31	36	2	S451008	SS4584	SS4581	43
36	MJ3620	7 1/8	11 1/2	12 1/2	37	42	2	S451208	SS4584	SS4581	48
42	MJ4220	7	12	14 1/2	42 3/4	48	2	S451408	SS4584	SS4581	57
48	MJ4820	7	12 3/4	16 1/2	48 3/8	54	2	S451608	SS4584	SS4581	68

**Top Mount Single Hole**



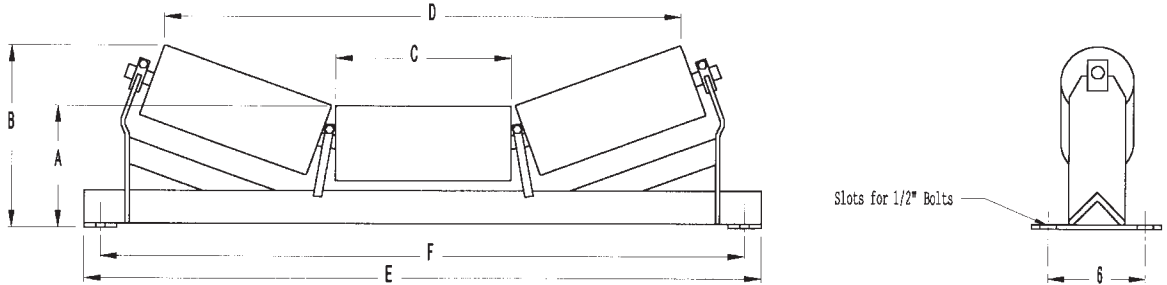
Belt Width	A	B	C	D	G	Part Number	E	F	Bracket	Part Number	E	F	Bracket	Rollers	Center Pins	End Pins	Weight in lbs
18	8 1/2	10 3/4	6 1/2	19 1/2	1	MJ1820-1	28	26	TRB121	MJ1820-2	29	27	TRB122	S450608	SS4584	SS4581	31
24	7 7/8	10 7/8	8 1/2	25 1/2	1	MJ2420-1	34	32	TRB121	MJ2420-2	35	33	TRB122	S450808	SS4584	SS4581	36
30	7 1/8	10 7/8	10 1/2	31	2	MJ3020-1	40	38	TRB123	MJ3020-2	41	39	TRB124	S451008	SS4584	SS4581	44
36	7 1/8	11 1/2	12 1/2	37	2	MJ3620-1	46	44	TRB123	MJ3620-2	47	45	TRB124	S451208	SS4584	SS4581	49
42	7	12	14 1/2	42 3/4	2	MJ4220-1	52	50	TRB123	MJ4220-2	53	51	TRB124	S451408	SS4584	SS4581	58
48	7	12 3/4	16 1/2	48 3/8	2	MJ4820-1	58	56	TRB123	MJ4820-2	59	57	TRB124	S451608	SS4584	SS4581	69

*Weights are approximate. Dimensions are in inches and subject to change without notice.*

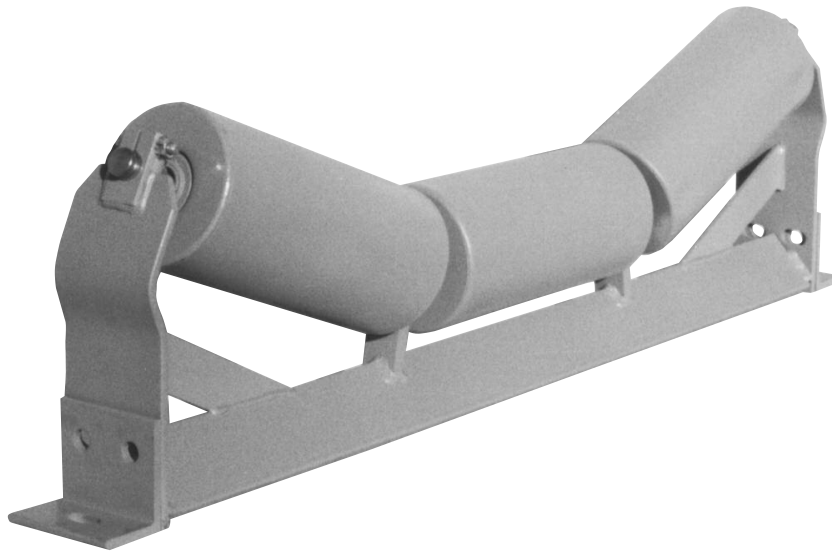
## 3-Roll Steel Rollers 20-Degree

4 1/2" Dia. Rollers, Sealed for Life Bearings

Top Mount Double Hole



Belt Width	Part Number	A	B	C	D	E	F	Rollers	Center Pins	End Pins	Weight in lbs
18	MJST1820	7 1/4	9 1/2	6 1/2	19 1/2	29	27	S450608	SS4585	SS4581	31
24	MJST2420	7 1/4	10 1/4	8 1/2	25 1/2	35	33	S450808	SS4585	SS4581	36
30	MJST3020	7 1/4	10 7/8	10 1/2	31	41	39	S451008	SS4585	SS4581	44
36	MJST3620	7 1/4	11 1/2	12 1/2	37	47	45	S451208	SS4585	SS4581	49
42	MJST4220	7 1/4	12 1/4	14 1/2	42 3/4	53	51	S451408	SS4585	SS4581	58
48	MJST4820	7 1/4	13	16 1/2	48 3/8	59	57	S451608	SS4585	SS4581	69



**MJ3020-1**